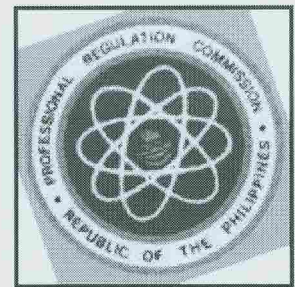




Bids and Awards Committee

Republic of the Philippines
Professional Regulation Commission
P. Paredes St., Sampaloc, Metro Manila
Tel.Fax: 310-0037

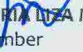


Section VII. Drawings

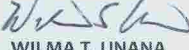
Insert here a list of Drawings. The actual Drawings, including site plans, should be attached to this section or annexed in a separate folder.

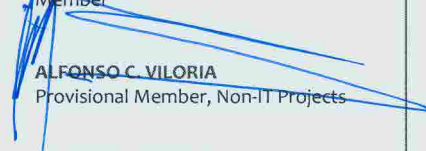

ARISTOGERSON T. GISMUNDO
Chairman


ARJAY R. ROSALES
Vice-Chairman


MARIA LISA M. HERNANDEZ
Member


HENRIETTA P. NARVAEZ
Member


WILMA T. UNANA
Member


ALFONSO C. VILORIA
Provisional Member, Non-IT Projects

GREGORIO B. DELORO
Provisional Member, IT Projects

SECRETARIAT:

KAREN M. MAGSALIN
Secretary

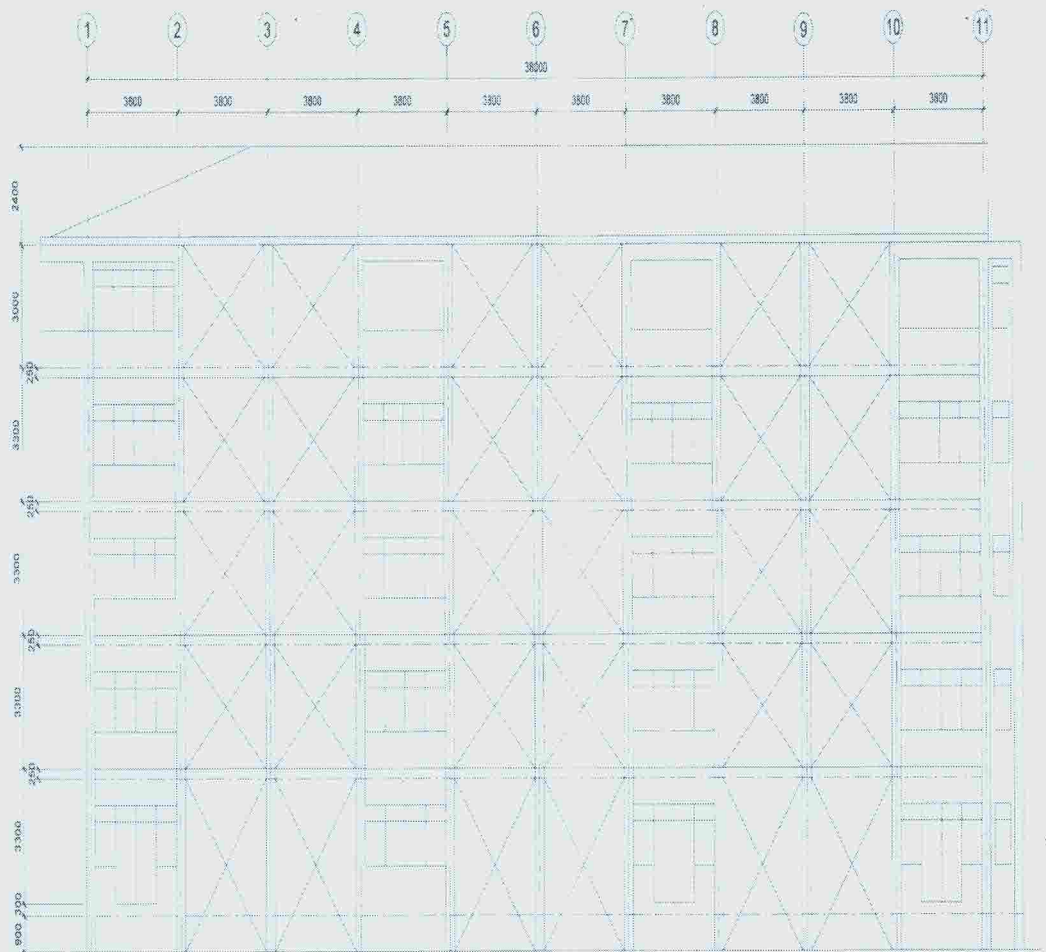
ATTY. VICTOR RICO P. LOPEZ
Member

MARGIERY D. DULIN
Member

GLENN I. PAJARON
Member

CHRISTOPHER A. MAYO
Member

LIEZEL F. BURAGA
Member



LAYOUT OF CROSS BRACINGS
FRONT ELEVATION (TYP. TO REAR ELEVATION)

SCALE 1:60 (N/A)

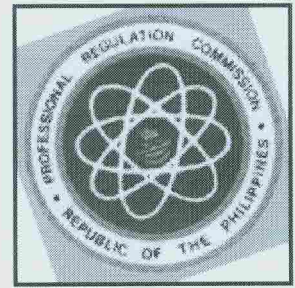
NOTES:

- EXPANSION ANCHORS
Min. $F_u = 800 \text{ MPa}$
- STRUCTURAL STEEL, A36
 $F_y = 248 \text{ MPa}$
- REINFORCING STEEL
 $F_y = 413 \text{ MPa}$
- CONCRETE, 28th DAY STRENGTH
 $f'_c = 20.7 \text{ MPa}$



Bids and Awards Committee

Republic of the Philippines
Professional Regulation Commission
P. Paredes St., Sampaloc, Metro Manila
Tel.Fax: 310-0037



[Signature]
ARISTOGERSON T. GESMUNDO
Chairman

[Signature]
ARJAY R. ROSALES
Vice-Chairman

[Signature]
MARIA LIZA M. HERNANDEZ
Member

[Signature]
HENRIETTA P. NARVAEZ
Member

[Signature]
WILMA T. UNANA
Member

[Signature]
ALFONSO C. VILORIA
Provisional Member, Non-IT Projects

[Signature]
GREGORIO B. DELORO
Provisional Member, IT Projects

SECRETARIAT:

KAREN M. MAGSALIN
Secretary

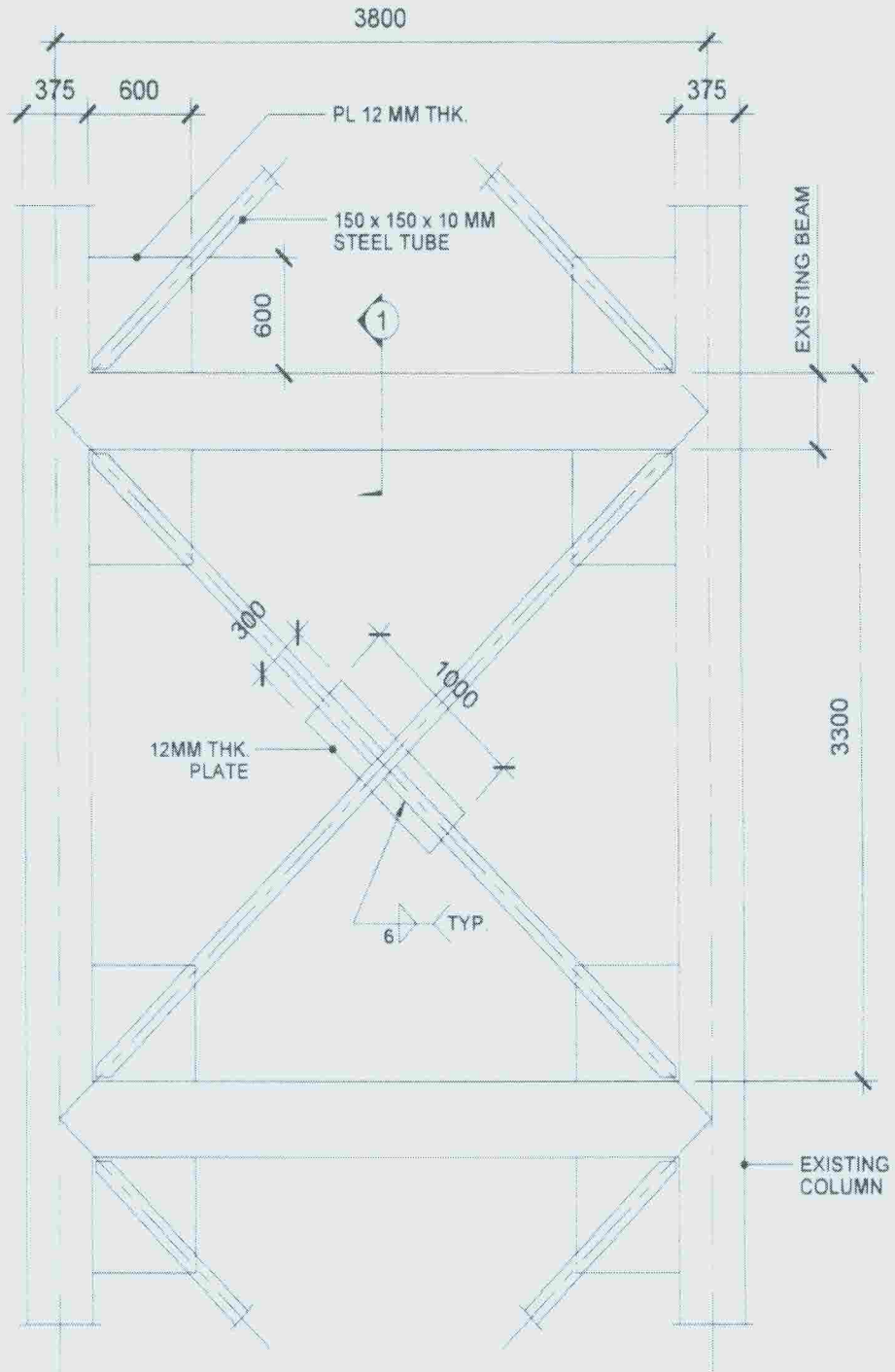
ATTY. VICTOR RICO P. LOPEZ
Member

MARGIERY D. DULIN
Member

GLENN I. PAJARON
Member

CHRISTOPHER A. MAYO
Member

LIEZEL F. BURAGA
Member

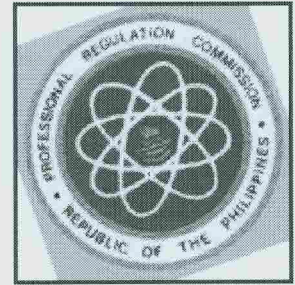


ELEVATION
SCALE 1 : 25 MTRS.



Bids and Awards Committee

Republic of the Philippines
Professional Regulation Commission
P. Paredes St., Sampaloc, Metro Manila
Tel.Fax: 310-0037



[Signature]
ARISTOGERSON T. GESMUNDO
Chairman

[Signature]
ARJAY R. ROSALES
Vice-Chairman

[Signature]
MARIA LIZA M. HERNANDEZ
Member

[Signature]
HENRIETTA P. NARVAEZ
Member

[Signature]
WILMA T. UNANA
Member

[Signature]
ALFONSO C. VILORIA
Provisional Member, Non-IT Projects

GREGORIO B. DELORO
Provisional Member, IT Projects

SECRETARIAT:

KAREN M. MAGSALIN
Secretary

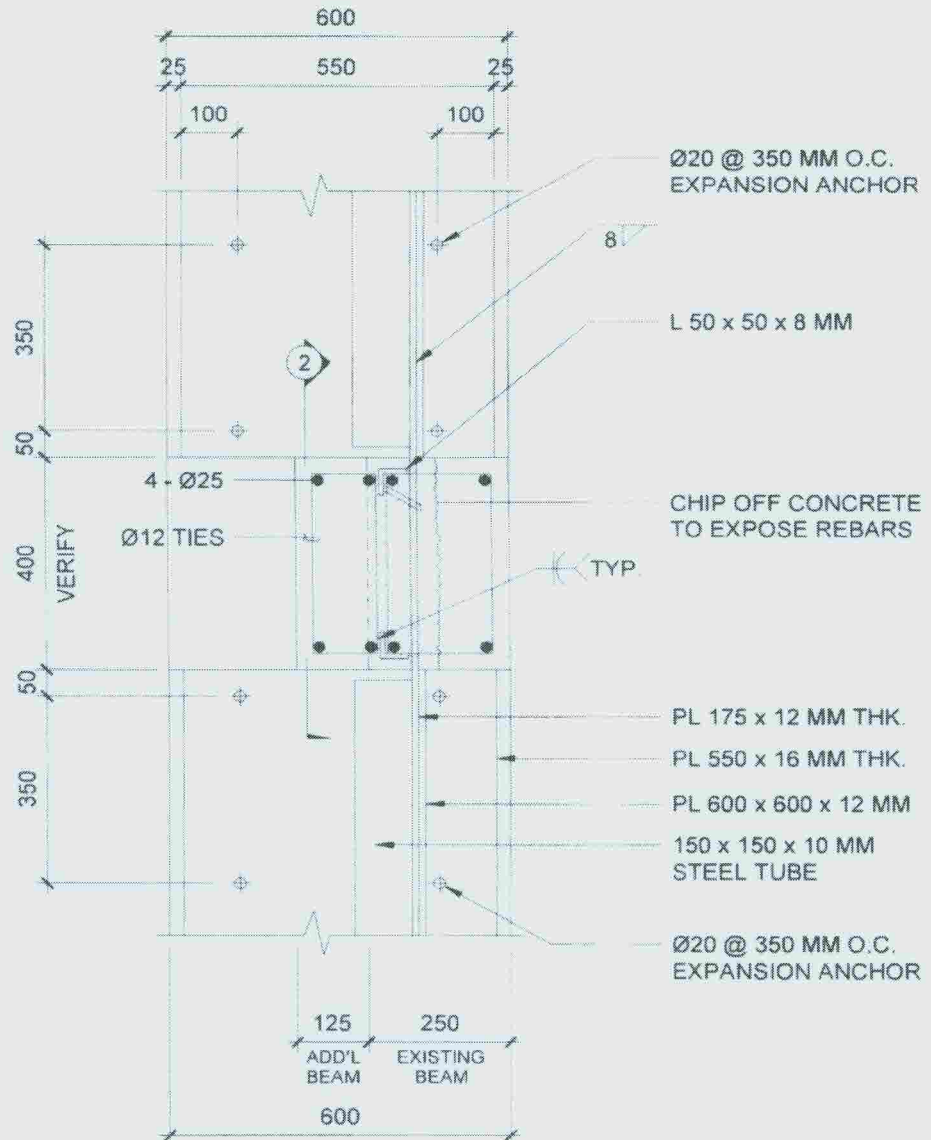
ATTY. VICTOR RICO P. LOPEZ
Member

MARGIERY D. DULIN
Member

GLENN I. PAJARON
Member

CHRISTOPHER A. MAYO
Member

LIEZEL F. BURAGA
Member



SECTION - 1
SCALE 1 : 8 MTRS

